

Abbeville Road, Clapham Common, SW4

2 bedroom flat - purpose built for sale

£535,000

Leasehold

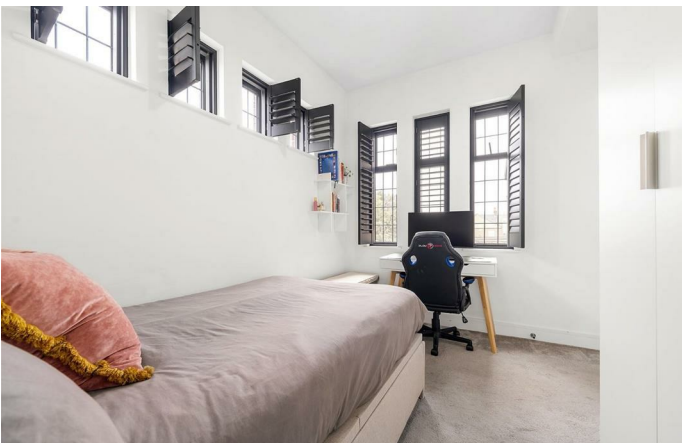
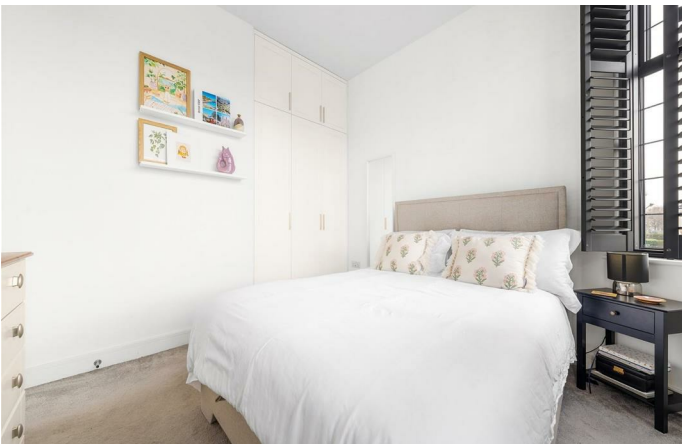
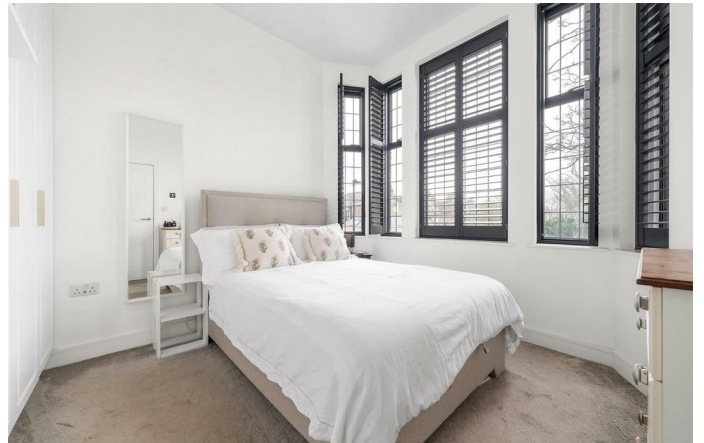
Property Details

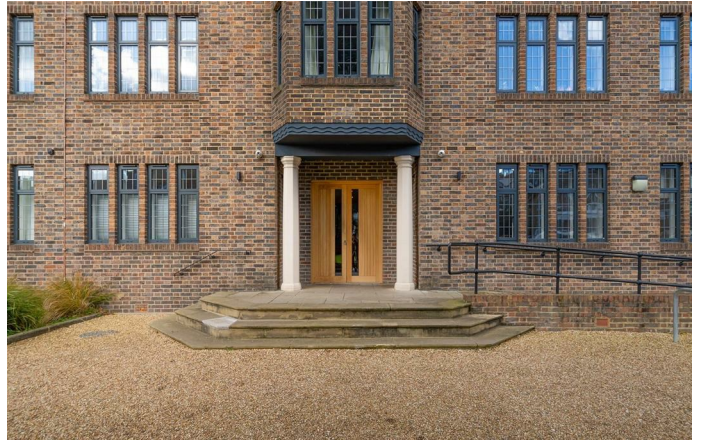
A stunning two bedroom modern apartment set within a secure gated development, with cafés, bakeries and everyday amenities right on the doorstep. Finished to a luxurious standard throughout, this elegant home features contemporary Crittall-style windows and benefits from approximately five years remaining on the build warranty. Residents also enjoy beautifully maintained grounds including a lawned garden and convenient bike storage. The open-plan living space is thoughtfully designed, with a sleek wraparound kitchen offering contrasting cabinetry, integrated appliances and ambient worktop lighting. The lounge area is bright and inviting, enhanced by a flurry of windows framed by plantation shutters and complemented by modern flooring and stylish décor. Both bedrooms are well separated, ideal for privacy or those considering renting a room. The principal bedroom enjoys a contemporary bay window and fitted wardrobes, while the second bedroom features multiple windows including a charming run of high-set glazing. A sophisticated bathroom completes the home, finished with marbled tiling, a bathtub with overhead shower and floating vanity storage.

Council tax band E EPC rating C (77)

Features

- Two bedrooms
- Stylishly presented
- Secure gated modern build
- Outstanding build warranty
- Residents' garden and bike storage
- Prime location close to Clapham High Street
- Amenities of up-market Abbeville Village moments away
- Northern Line a seven-minute walk
- Clapham Common a five-minute stroll
- Chain-free

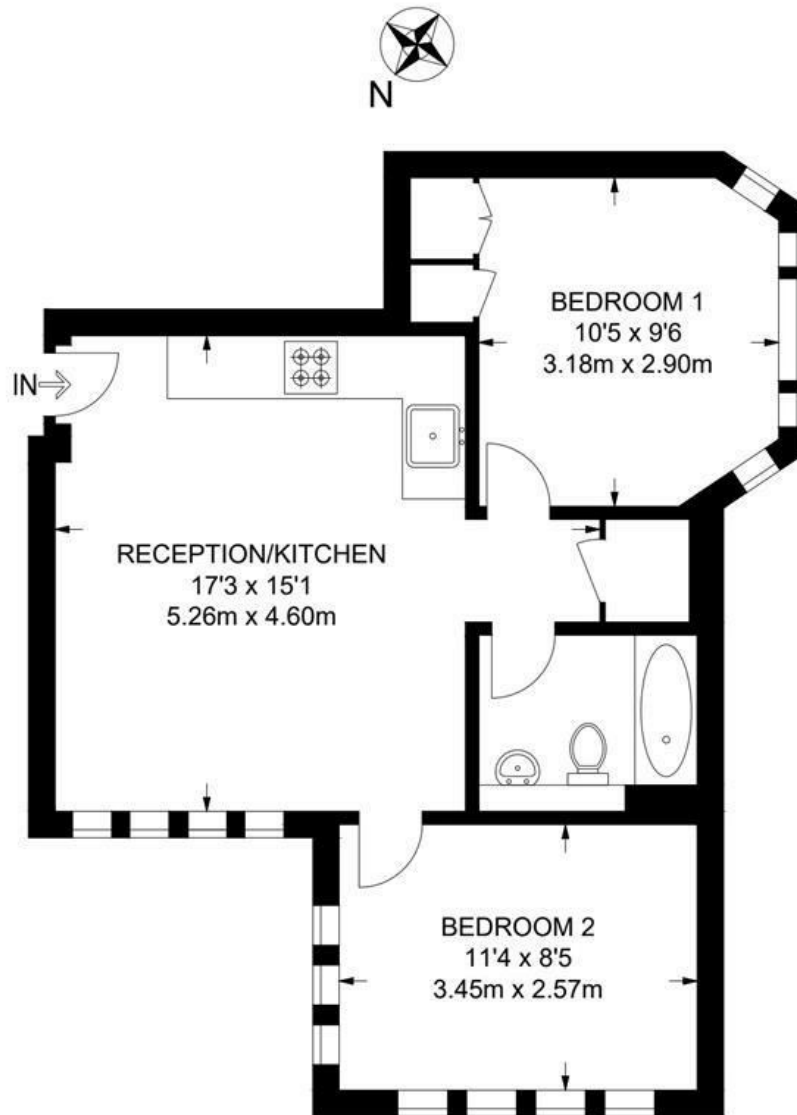




Abbeville Road, Clapham Common, SW4

Abbeville Road, SW4
2 Bedroom Flat

APPROXIMATE GROSS INTERNAL AREA: **473 SQ FT / 43.9 SQ M**



FIRST FLOOR



While we try our very best, floor plans are produced as a guide only and we take no responsibility for the precise accuracy with which any property is represented.

Abbeville Road, Clapham Common, SW4

